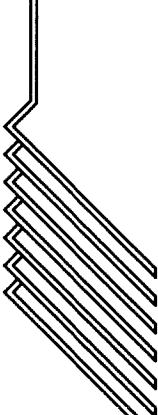


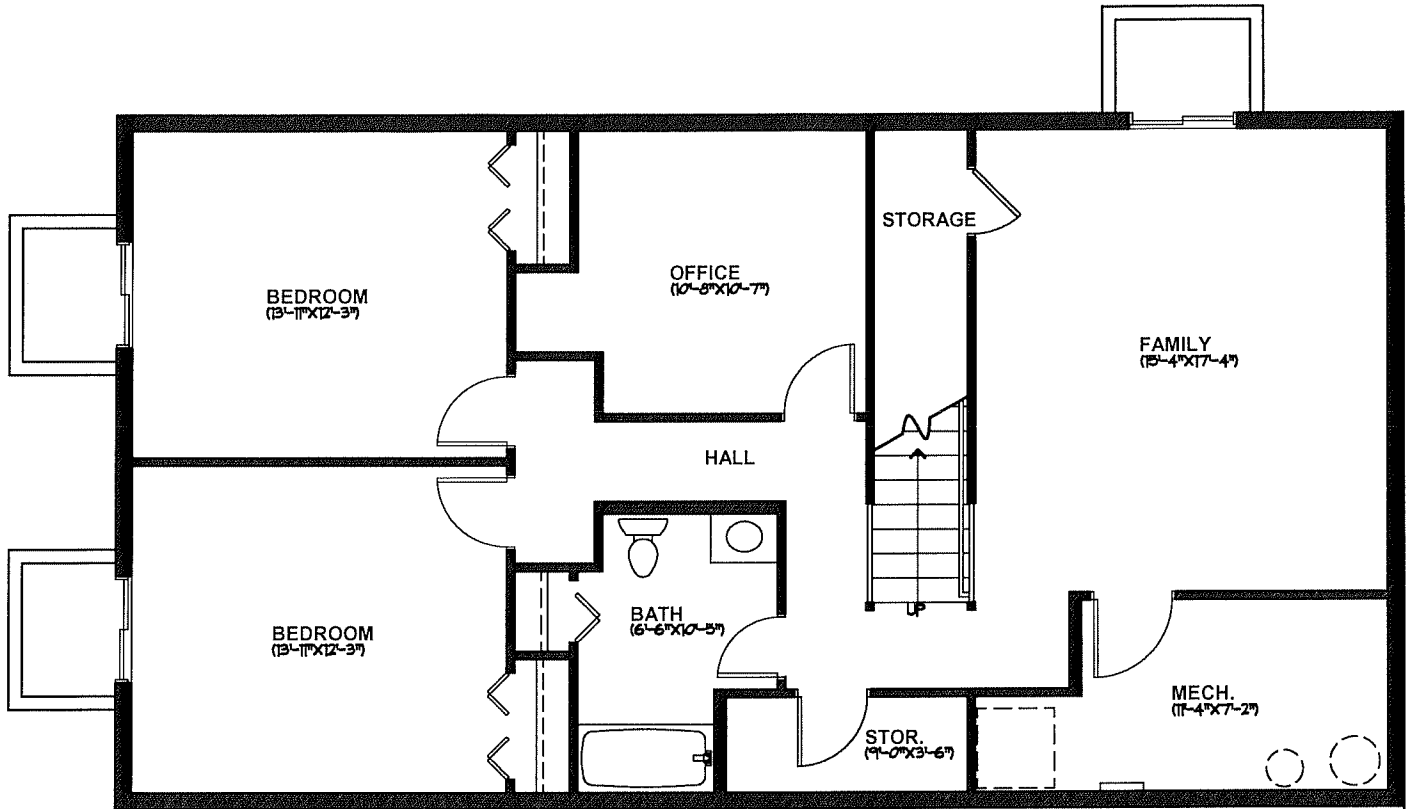
DRAWN BY: CMB
CHECKED BY: AJS
THIS DRAWING IS COPYRIGHTED AND
SHALL NOT BE REPRODUCED WITHOUT
ARCHITECT'S WRITTEN PERMISSION



© 2004 **BAKER • HOGAN • HOUX**
ARCHITECTURE & PLANNING /A.I.A./P.C.
P.O. BOX 185, 237 3RD AVENUE SE, PERHAM, MINNESOTA 56573 (218) 346-4505

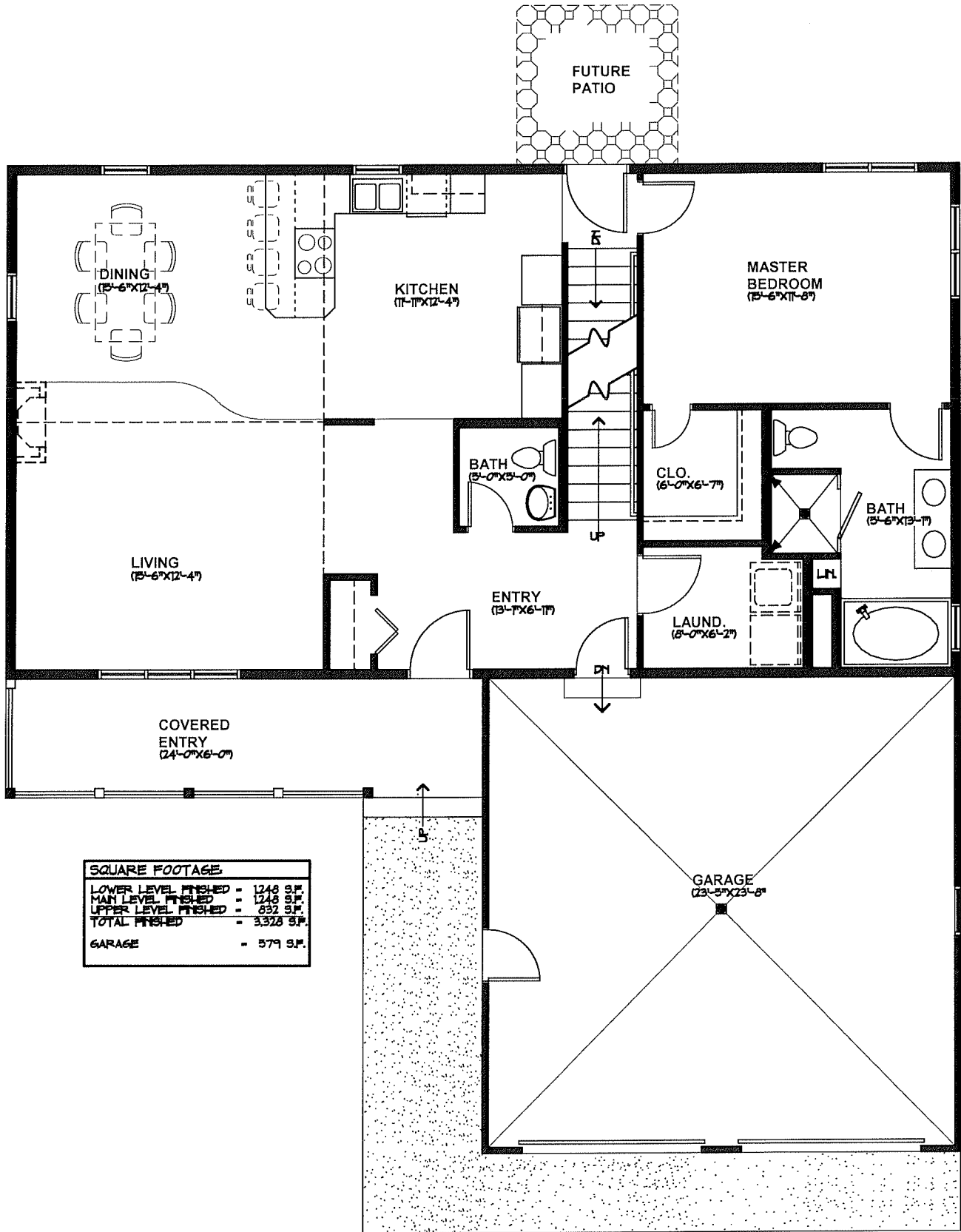
MMCDC HOMES - BAYVIEW 2
DETROIT LAKES, MINNESOTA

SHEET NUMBER:
A-1

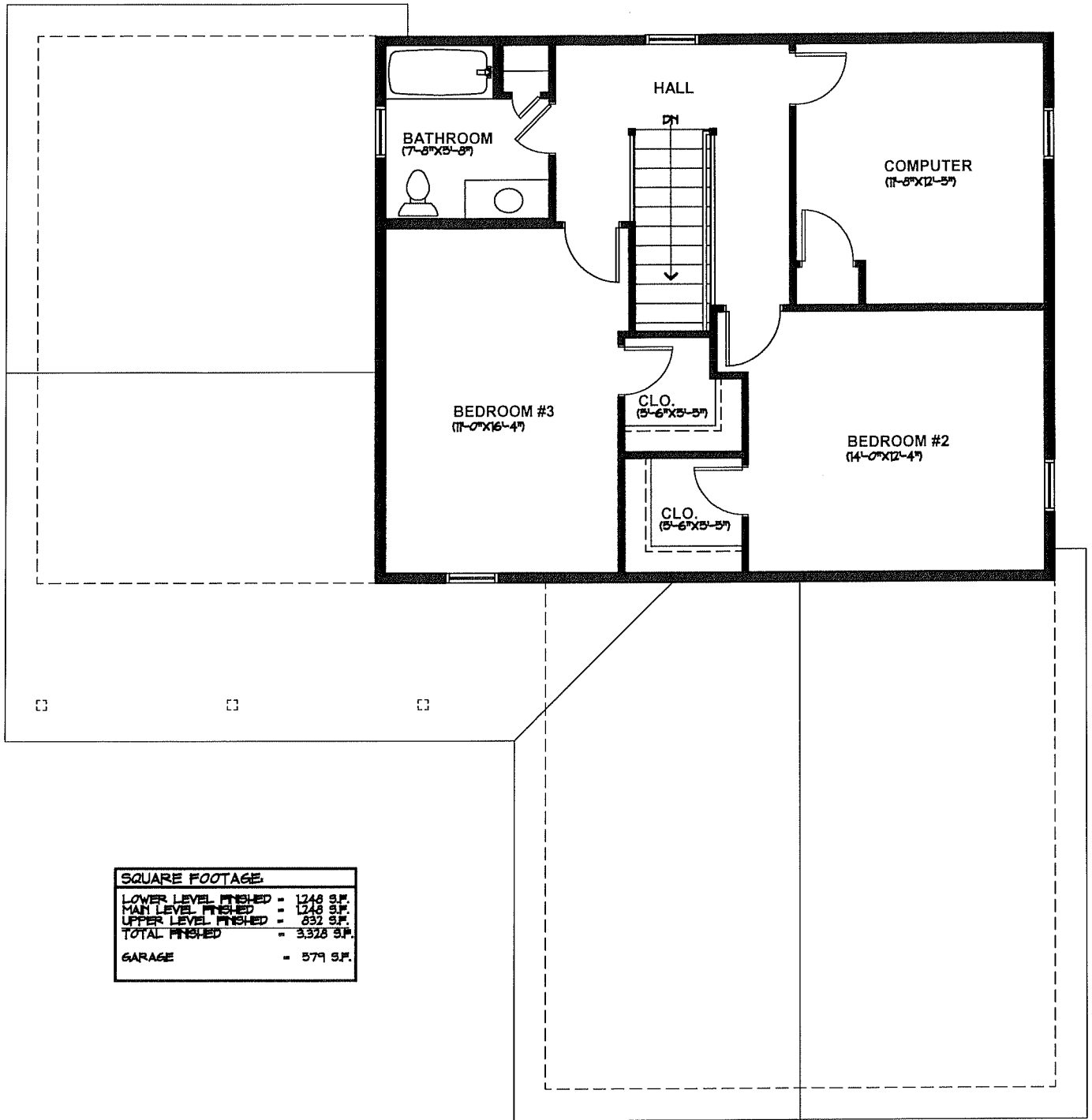


SQUARE FOOTAGE	
LOWER LEVEL FINISHED	= 1248 S.F.
MAIN LEVEL FINISHED	= 1248 S.F.
UPPER LEVEL FINISHED	= 832 S.F.
TOTAL FINISHED	= 3,328 S.F.
GARAGE	= 579 S.F.

LOWER LEVEL PLAN



MAIN LEVEL PLAN



SQUARE FOOTAGE	
LOWER LEVEL FINISHED	= 1246 S.F.
MAIN LEVEL FINISHED	= 1246 S.F.
UPPER LEVEL FINISHED	= 832 S.F.
TOTAL FINISHED	= 3328 S.F.
GARAGE	= 579 S.F.

UPPER LEVEL PLAN